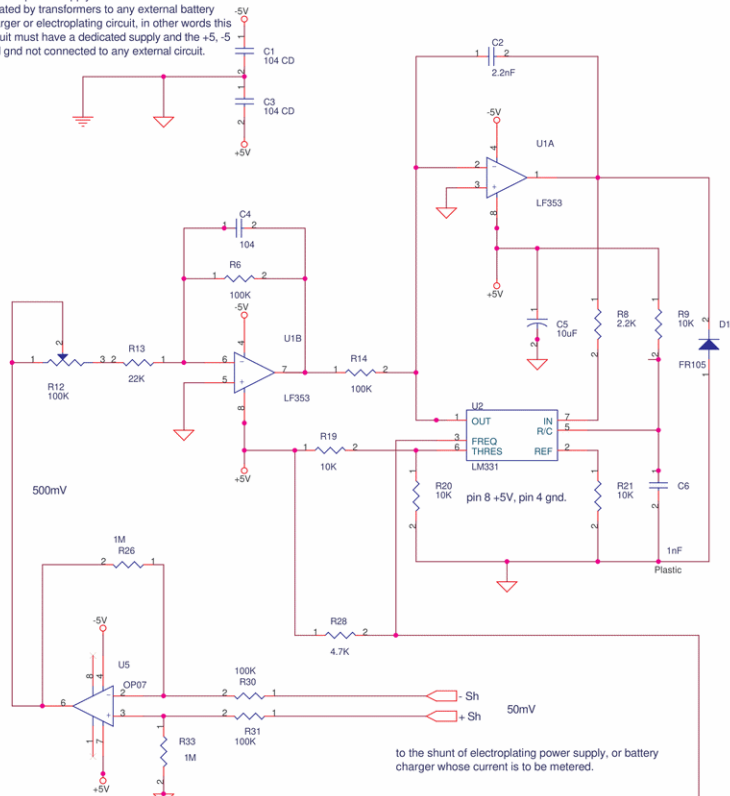
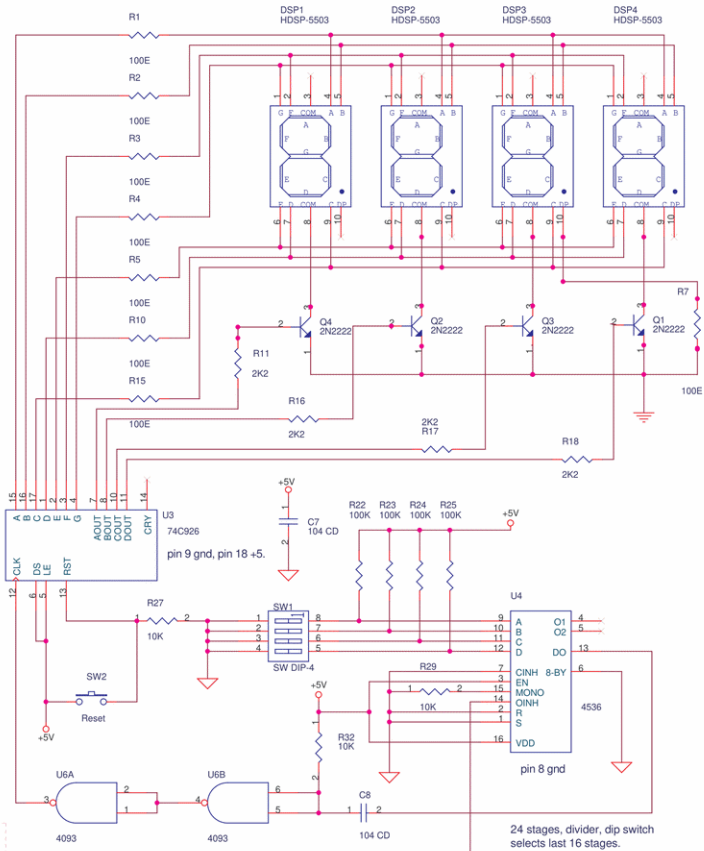


the dual power supply of 5V to this circuit must be isolated by transformers to any external battery charger or electroplating circuit, in other words this circuit must have a dedicated supply and the +5, -5 and gnd not connected to any external circuit.



to the shunt of electroplating power supply, or battery charger whose current is to be metered.



24 stages, divider, dip switch selects last 16 stages.

use 74HCT40XX chips in place of CD40XX for only 5V and high speed designs.

put 104 CD cap for all ICs from positive to negative close to IC, even if omitted in circuit, for opamps on dual supply two caps.

unused inputs of logic and opamps pull up or down to avoid oscillations and noise. connect supply of all chips if not mentioned.

"analog ground" and "digital ground" must be linked at power supply only, avoid loops, let grounds radiate from a ground plane.

use MFR 1% for all Resistors, 33E means 33 ohms, 22K means 22 kilo ohms, 1M is 1 megohm. 10T Trimpt means like 10 turn bourns.

'474 CD' is 47 with 4 zeros pF, 470000 pF, remove 3 zeros 470 nF, shift decimal 3 places 0.47uF. "pl" is plastic, low leakage multilayer.



delabs design
delabs-circuits.com
delabs.net

delabs circuits and technologies

Title	Amp Hour Meter		
Size B	Document Number	del20019	
Date	Friday, June 11, 2004	Sheet	1 of 1
Rev	1		