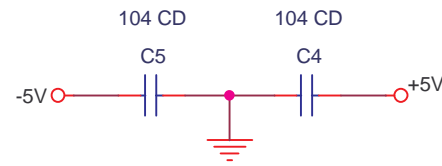
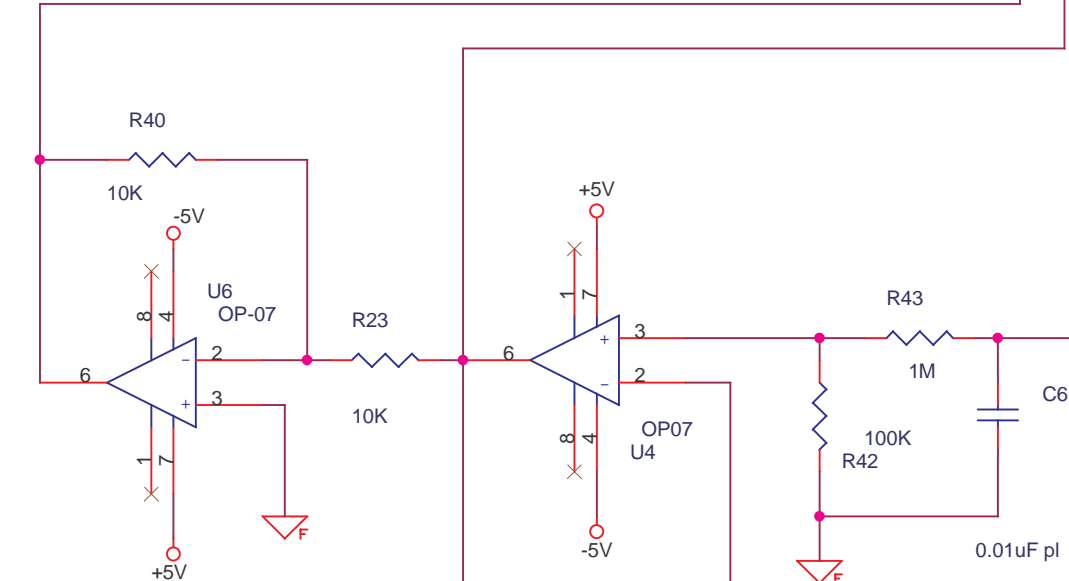
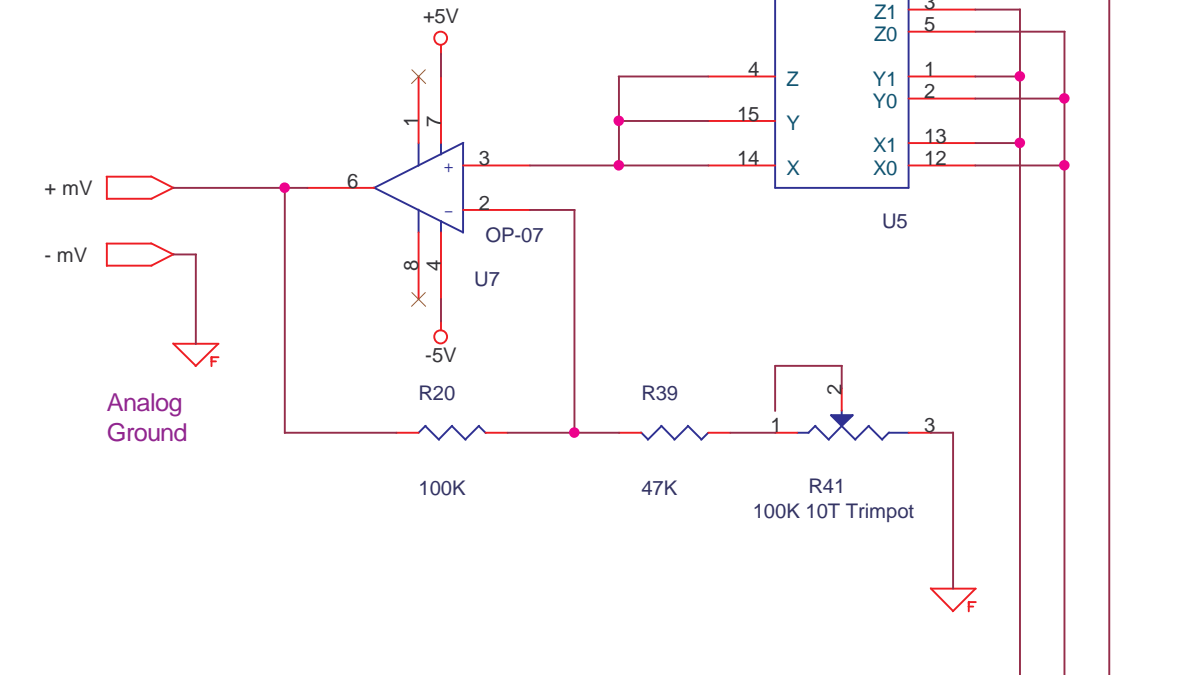


MFR 0.1% Resistors can be used for the D-A circuit for better results but as the reading is seen with 7135 it may not be required.



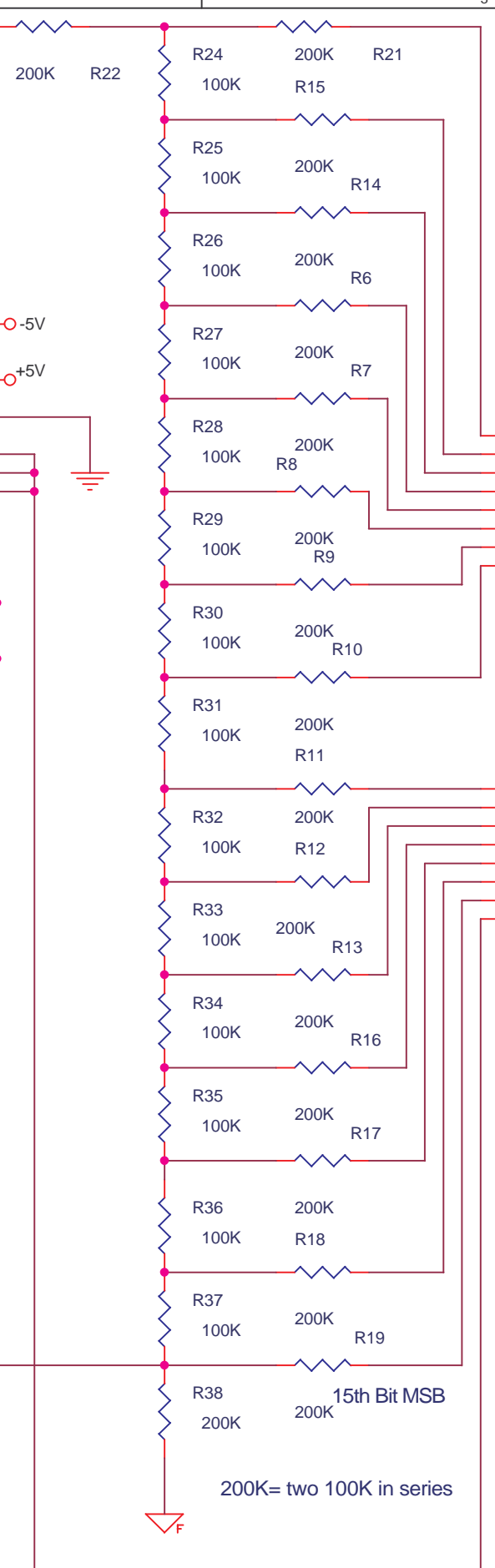
apply to terminals of instrument to be calibrated and also to 7135 input.



"analog ground" and "digital ground" must be linked at power supply only, avoid loops, let grounds radiate from a ground plane.

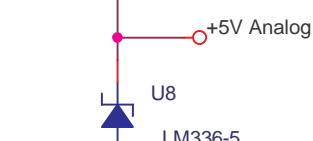
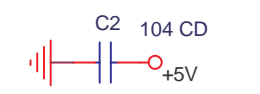
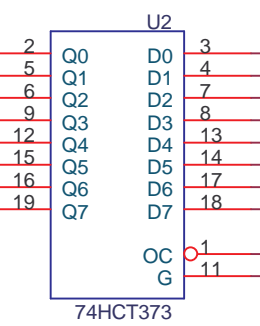
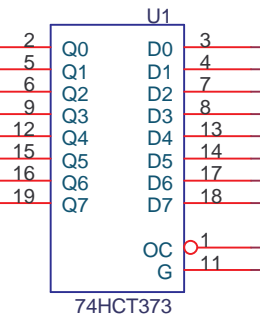
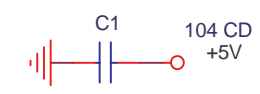
use MFR 1% for all Resistors, 33E means 33 ohms, 22K means 22 kilo ohms, 1M is 1 megohm. 10T Trimpot means like 10 turn bourns.

'474 CD' is 47 with 4 zeros pF, 470000 pF, remove 3 zeros 470 nF, shift decimal 3 places 0.47uF. "pl" is plastic, low leakage multilayer.



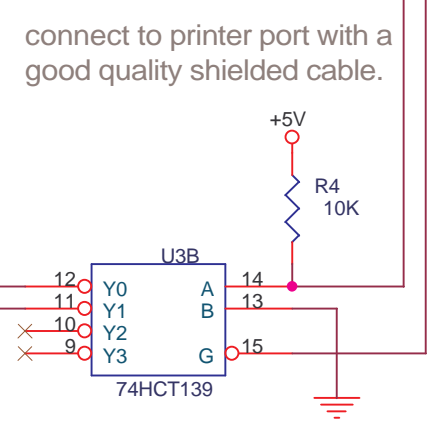
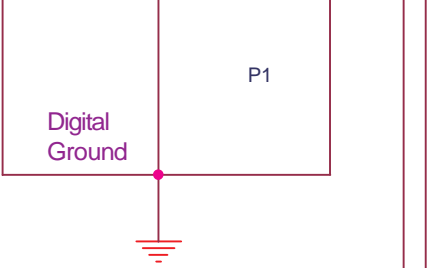
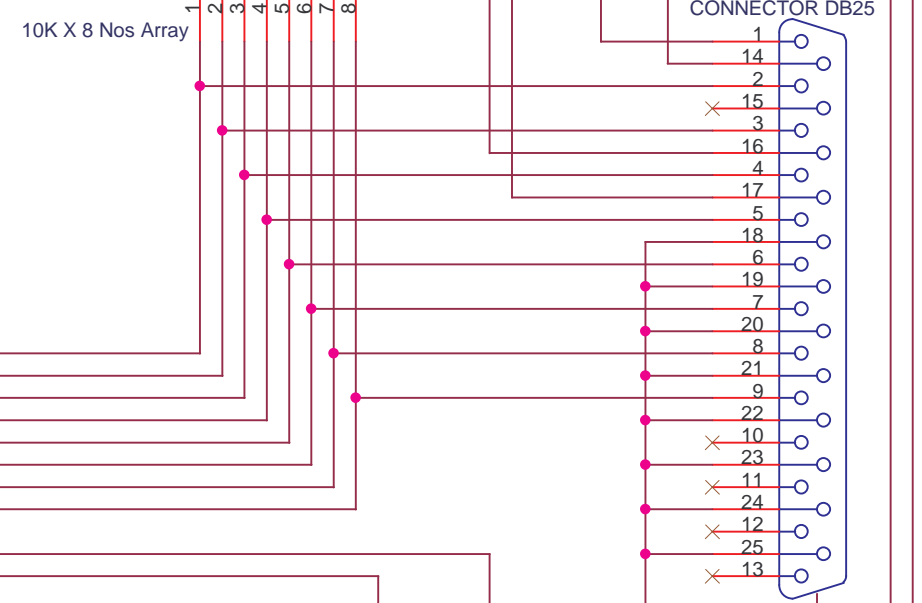
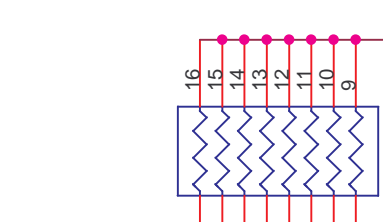
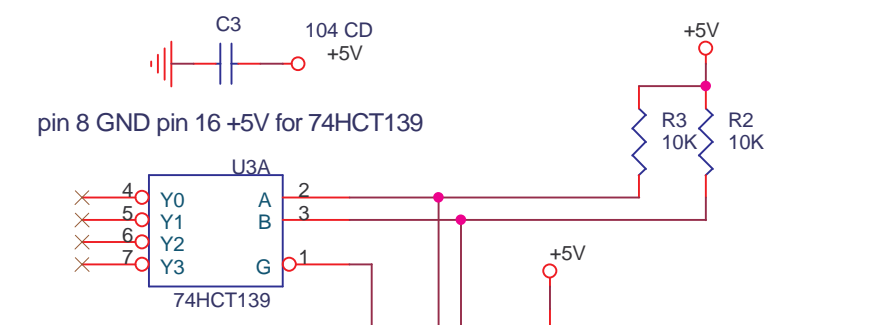
1st Bit LSB

use a D to A of your Choice, I put a low cost R 2R circuit as example, it will work but may not be very good, also note that input section is not given for that refer to del20002.sch which has the 7135 A-D to be used with this.



Polarity Bit

74HC373 Pin 10 GND, Pin 20 "+5V Analog", for this circuit use HCT only as using LS will not work, i used HC it was ok, and the 5V should be regulated and from a LM336-5V source for a stable analog output.



connect to printer port with a good quality shielded cable.

delabs circuits and technologies

Title		
Interface D to A to PC Printer Port		
Size B	Document Number	Rev 1
	del20004.sch	
Date:	Friday, April 09, 2004	Sheet 1 of 1

- <http://delabs.topcities.com/>
- <http://delabs.netfirms.com/>
- <http://delabs.tripod.com/>
- <http://geocities.com/delabs/>
- <http://members.fortunecity.com/delabs/>